



Home

Creating Your First myRIO Application

Configuring a Wireless Network on the myRIO

Tutorial: 1 2 3 4

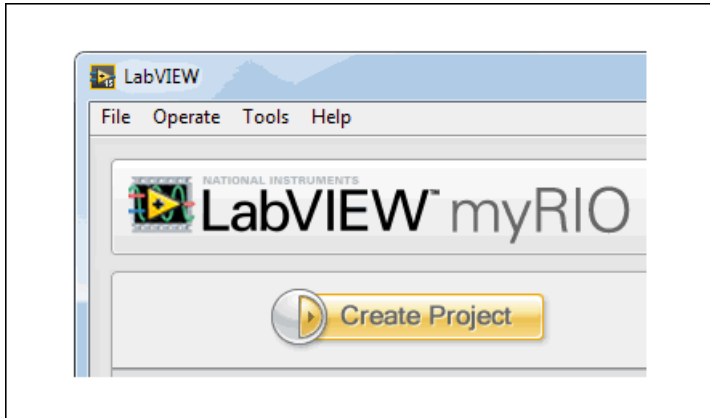
Creating Your First myRIO Application

This tutorial teaches you how to create your own application to control your myRIO onboard devices.

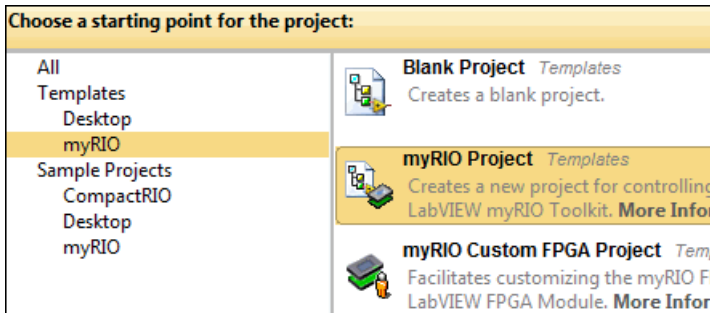
Part 1: Creating a myRIO Project

Before programming with the myRIO, you must first create a myRIO project. With a myRIO project, you can group together all the files relevant to your application and run VIs on the myRIO.

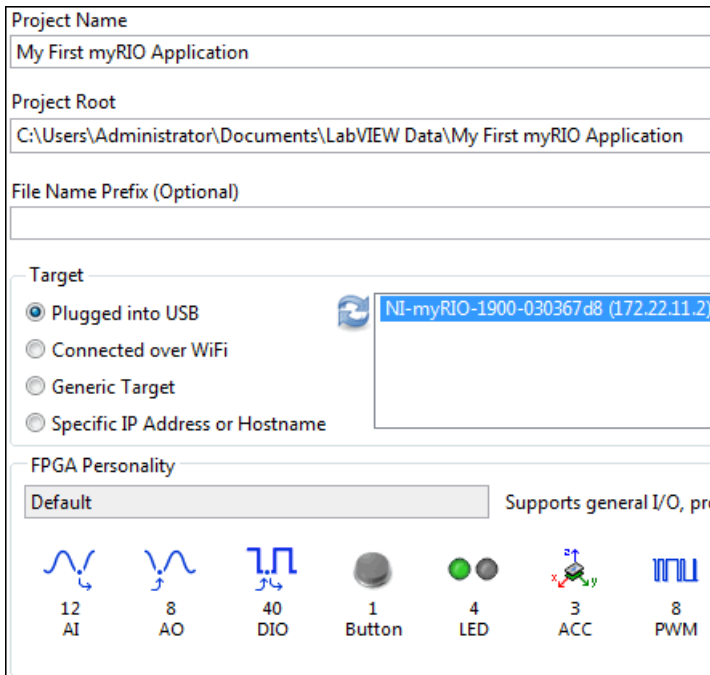
Complete the following steps to create a myRIO project by using the **myRIO Project** template, which is the simplest way to start programming with the myRIO.



1. Click the **Create Project** button in LabVIEW to display the **Create Project** dialog box.

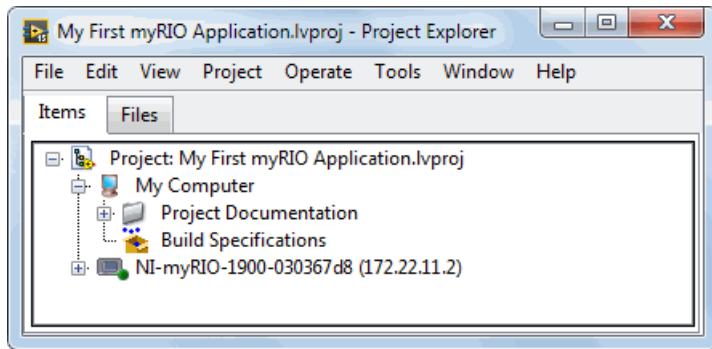


2. Select **Templates»myRIO** from the project category.
3. Select **myRIO Project** from the project list.
4. Click **Next** to configure details of the project.



5. In the **Project Name** text box, enter *My First myRIO Application*.
6. In the **Project Root** text box, enter the path to the directory for saving the project.
7. (Optional) In the **File Name Prefix** text box, enter a prefix that distinguishes the copy of the template you create from additional copies of the template you create later.
8. In the **Target** section, select the myRIO on which to run your application.
9. The **FPGA Personality** section indicates that the **myRIO Project** template uses a default FPGA personality. Refer to the *Choosing FPGA Personalities* topic in the *LabVIEW Help* for information about FPGA personalities.
10. Click **Finish**. LabVIEW saves the project and opens the **Project Explorer** window.

11. Explore the **Project Explorer** window. For example,



expand items in the project tree to find `Main.vi`. Refer to the `Project Documentation` folder for detailed information about this myRIO project.

You have successfully created a myRIO project. Now, proceed to learn how to create applications based on the myRIO project.

Next 